

Google Earth Quick Guide

Creating A KML Placemark

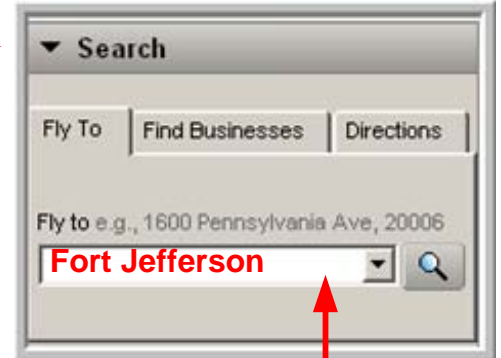


Step One

Before you enter your first location into the address bar, please click the arrow next to the **“layers”** menu on the lower left-hand side of your screen—this will remove the layers menu and make your screen less cluttered. Now we are ready to begin.

Step Two

Make sure **“Search”** is selected—if it is, you will see an address bar on the upper left-hand side of your screen, and you will be able to type your desired location there.

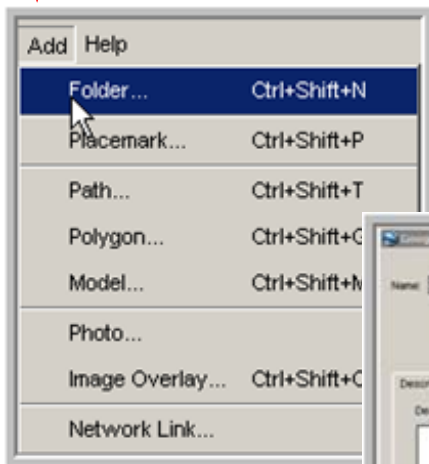


Step Three

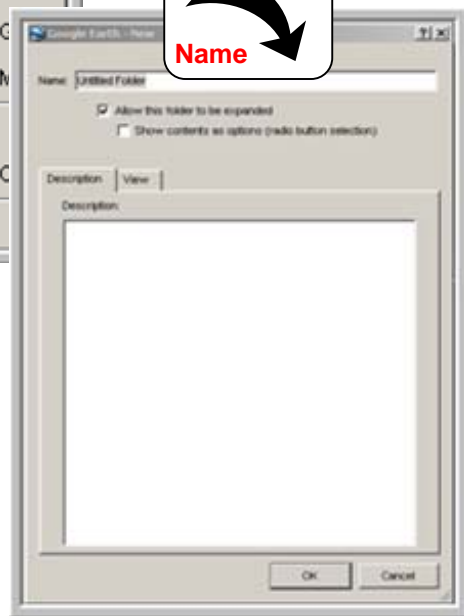
Select **“Add”** at the top toolbar and choose **“Folder.”** Name your folder with your story’s name—something like “Fort Jefferson” This folder is where all of your place marks for your story will be kept.

Step Four

Choose your first historical location by either typing the address in the address bar at the top of the screen (under “Fly To”) and clicking return or by clicking on the direction button to control spinning the earth up and down or left and right.



Type Folder
Name



What Is KML?

KML is a file extension similar to .doc, .xls, or .jpg. On Google Earth, a KML file references specific locations on the earth and enables you to create a placemark that targets these locations.

Step Five

Once you are there, you will want to add a placemark to denote the meaning of the place.

Select "Add" at the top toolbar and choose "Placemark." This will bring up a box with a "name" and "description."

Click on the yellow pushpin to select the type of placemark you'd like to see.

You will also see a yellow pushpin at the side of the box.

You can choose from many different types of icons to tell about the place. (For example: select a house icon to show someone's home or a tree to show forests.)

Add Website URL

Name: Fort Jefferson
Latitude: 24°38'0.18"N
Longitude: 82°55'13.35"W

Type | Style, Color

Description:

Description: Fort Jefferson, the largest masonry fort in the United States, took up just about all the space on 25 acre Garden Key, located in the Dry Tortugas—a chain of tiny sun-bleached islands west of Key West. You might also want to add their Web site name here: http://en.wikipedia.org/wiki/Dry_Tortugas_National_Park

OK Cancel

Step Six

Once you have chosen your icon, make sure to name it and write a description for it, and to save it to the folder you've created under "My Places." Make sure the name and description help to tell your story. For example, "Name: Fort Jefferson; Description: Fort Jefferson, the largest masonry fort in the United States, took up just about all the space on 25 acre Garden Key, located in the Dry Tortugas—a chain of tiny sun-bleached islands west of Key West. You might also want to add their Web site name here: http://en.wikipedia.org/wiki/Dry_Tortugas_National_Park